

BOYS SPORTSWEAR SPRING/SUMMER 2018

AGES 3-8

MOOD BOARD

THE WEEKEND ADVENTURE



LET THE FUN BEGIN

AVIATOR STYLE BOMBER



A. DAY BREAK BLUE



B. GRASSMARK GREEN

MILITARY STYLE MEETS DENIM COOL WITH THIS TEXTURE MIX BOMBER JACKET. THIS CONTRAST PATCH DESIGN WILL BOOST ANY OUTFIT.

FABRIC COMPOSITION: 1. BODY; 100 PERCENT POLYAMIDE-NYLON,
2. SLEEVES; 100 PERCENT COTTON



AVIATOR PATCH
AND SCREENPRINT
CLOSEUP

SWEATSHIRTS



A. QUICKSILVER



B. DYNAMO BLUE

HEAD TO THE TREEHOUSE WITH THIS ACTION-PACKED PULL-ON SWEATSHIRT, FEATURING COMIC BOOK PATCHES.

FABRIC COMPOSITION: 92 PERCENT COTTON, 8 PERCENT POLYESTER

WOVEN BEACH HOODIES



A. BEACH BLUE

B. READY RED

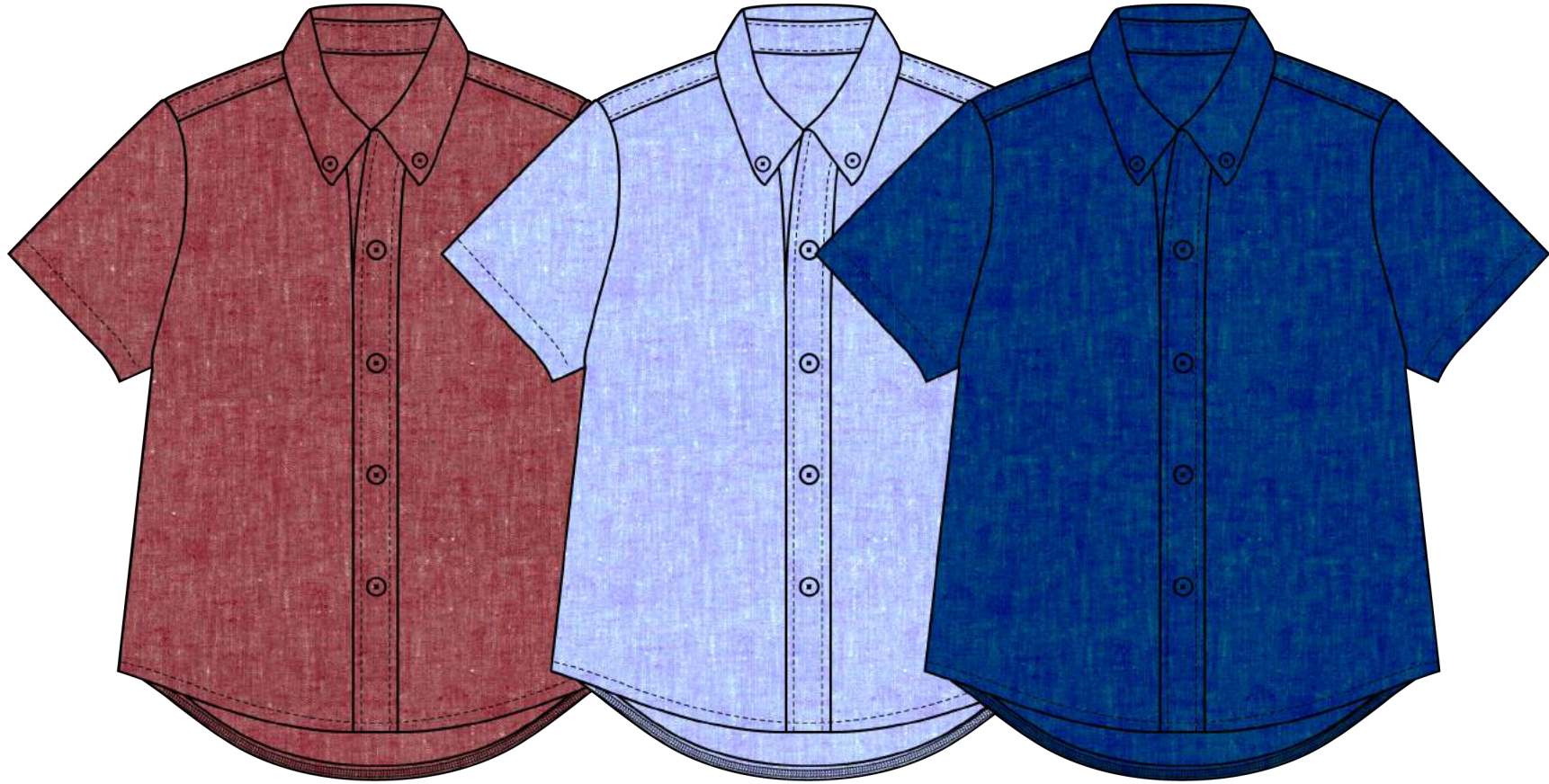
C. MID-DAY SUN

D. OVERCAST

A LIGHTWEIGHT, BREEZY LINEN-AND-COTTON PULLOVER SHIRT PATTERNED IN HERRINGBONE-TEXTURED STRIPES FEATURES A THREE-BUTTON PLACKET AND ATTACHED HOOD THAT MAKES IT A GREAT OPTION ON WINDY DAYS.

FABRIC COMPOSITION: 100% COTTON

SHORT SLEEVE WOVEN TOPS



A. BRICK RED

B. LT BLUE

C. COBALT BLUE

PERFECT FOR HOT SUMMER DAYS, THIS BREEZY COTTON CHAMBRAY SHIRT FEATURES A BUTTON DOWN FRONT AND PLENTY OF LAID-BACK EASE.

FABRIC COMPOSITION: 100 PERCENT COTTON CHAMBRAY

BOYS GRAPHIC TEES



A. WILD

B. UNIQUE

C. FORTUNE DAYS

AS IF IT WASN'T BOLD ENOUGH, THE MONOCHROME PALETTE OF THESE PRINTED COTTON TEES ONLY ADD TO THE STATEMENT

FABRIC COMPOSITION: 100 PERCENT COTTON

LONG LEG PRESENTATION

STRAIGHT FIT



**A. BLACK OMBRE
WASH**

**B. MED BLUE
WASH**

**C. LT BLUE
WASH**

**D. VINTAGE
WASH**

**E. BLEACHED OUT
WASH**

PLAY THE DAY AWAY WITH THESE DURABLE STRETCH-DENIM PANTS FEATURING
FADED AND WORN EFFECTS

FABRIC COMPOSTION: 72 PERCENT COTTON, 26 PERCENT POLYESTER,
2 PERCENT ELASTANE-SPANDEX

TERRY FLATFRONT SHORTS

RELAXED FIT



**A. HEATHER
RUST**

**A. HEATHER
GREEN**

**A. HEATHER
BLUE**

**A. HEATHER
CHARCOAL**

THE WEEKENDS ARE FOR LOUNGING - AND THESE SOFT MEDIUM-WEIGHT FRENCH TERRY SHORTS ARE JUST THE TICKET. SWAP A HOODY FOR A WHITE TEE WHEN YOU NEED TO LEAVE THE HOUSE.

FABRIC COMPOSITION: 100 PERCENT COTTON



CLOSEUP OF
EXPEDITION
PATCHES

BOXER BRIEFS



**A. HEATHER
GOLD**



**B. HEATHER
SKY BLUE**



**C. HEATHER
GREEN GLOW**



**D. HEATHER
ORANGE**



**E. HEATHER
ROYAL**



**F. HEATHER
LT GREY**



**G. HEATHER
CRIMSON**



**H. HEATHER
MIDNIGHT**

WHATEVER COLOR YOU PICK, OUR BOXER SHORTS ARE MADE FROM SMOOTH COTTON-BLEND THAT FEELS SOFT AND COMFORTABLE.

FABRIC COMPOSITION: 90 PERCENT COTTON, 10 PERCENT ELASTANE-SPANDEX